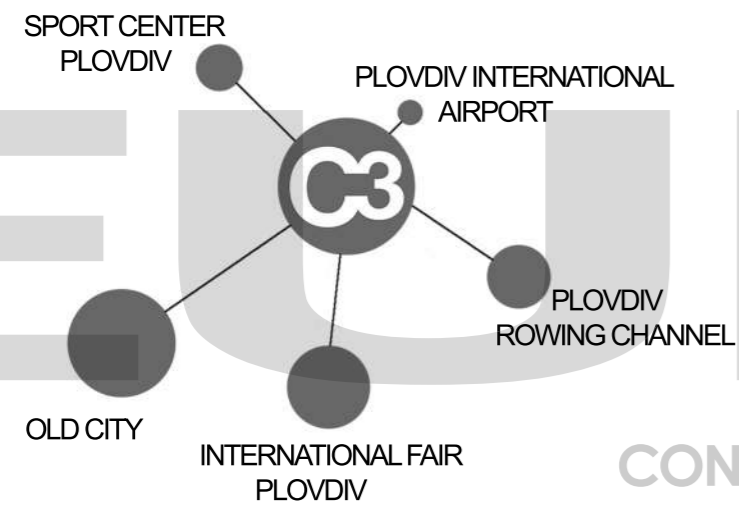
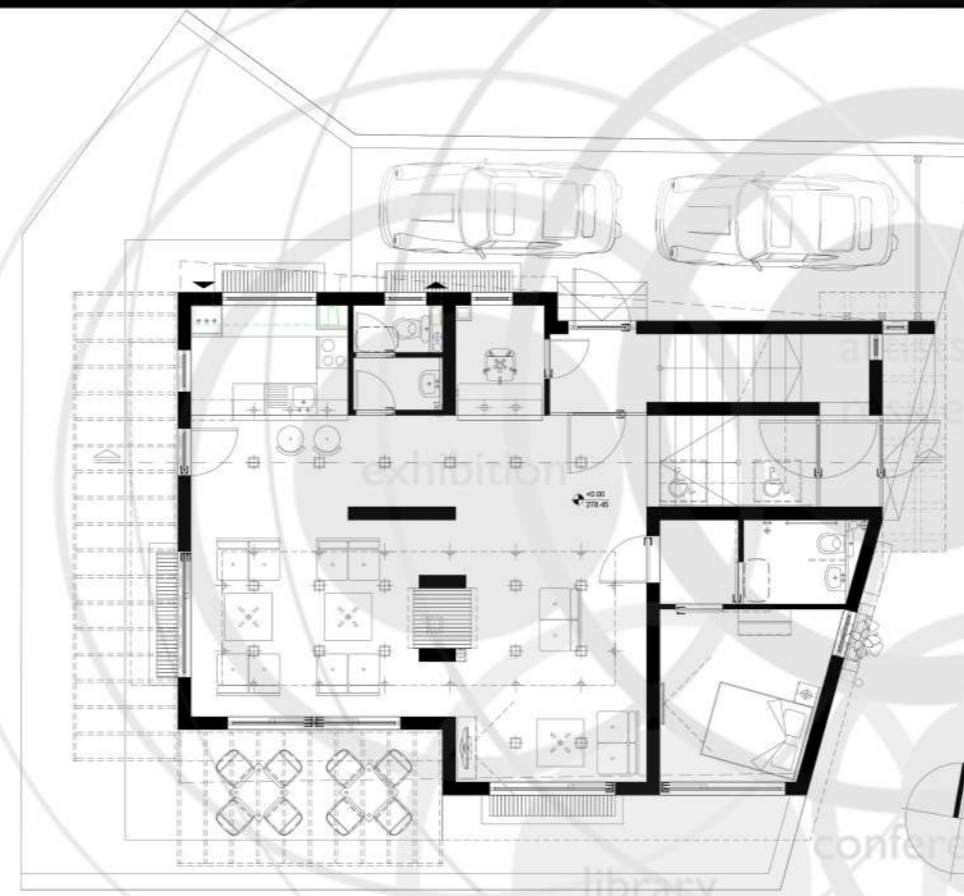
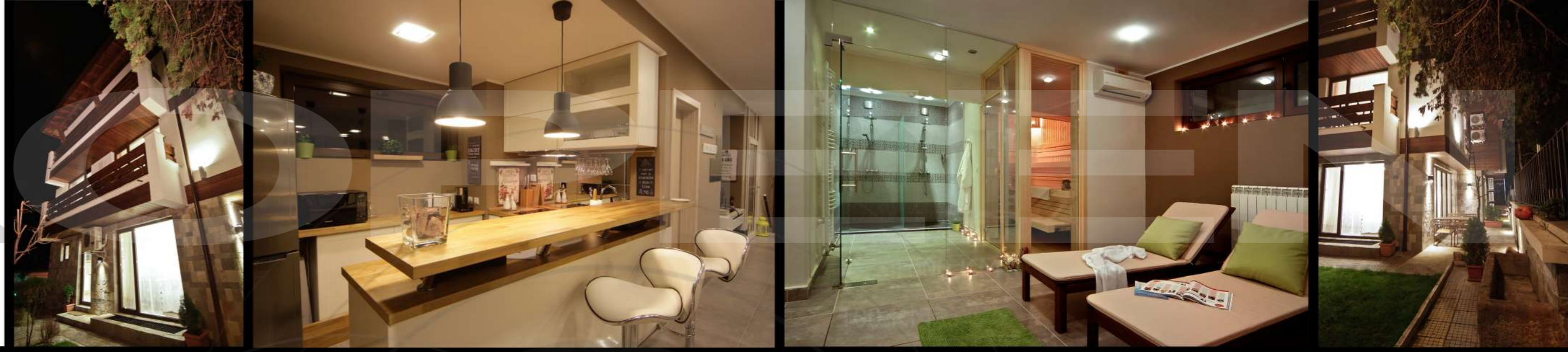


TARGET



CONNECTIONS



The common areas are mostly open spaces divided delicately by a fireplace. The kitchen corner and the living room are together separated with a bar. It is presented a fully equipped disabled room on the floor connected with an elevator nearby the main entrance.

The design is contemporary according to the city needs. The used colors of the walls clearly connect the external with interior. On underground level are the SPA facilities such as sauna, turkish bath, jacuzzi, relax area and small fitness equipments.



ground floor 1:100

ventilated roof



The used **ventilated** type of facade and wall coverings were developed to protect the building against the combined action of rain and wind by counterbalancing the effects of water beating on walls and keeping the building dry, with high level aesthetic characteristics and undisputed advantages of heat insulation and soundproofing.

The installation of system for facades, both for new buildings and renovations of existing buildings, gives considerable advantages of wall durability over time and of energy saving, especially where tall, exceptionally exposed, isolated buildings are concerned.

In terms of **thermal energy**, the ventilated walls reduce the amount of heat that buildings absorb in hot weather conditions due to partial reflection of solar radiation by the covering and the ventilated air gap and to the application of insulating material, thus achieving considerable reduction in the costs of air conditioning. Vice versa, in winter, ventilated walls manage to retain heat, resulting in savings in terms of heating.

ventilated facade

